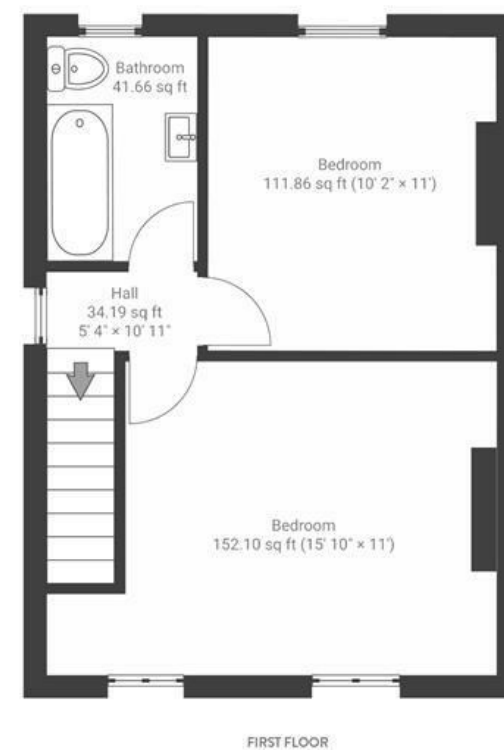
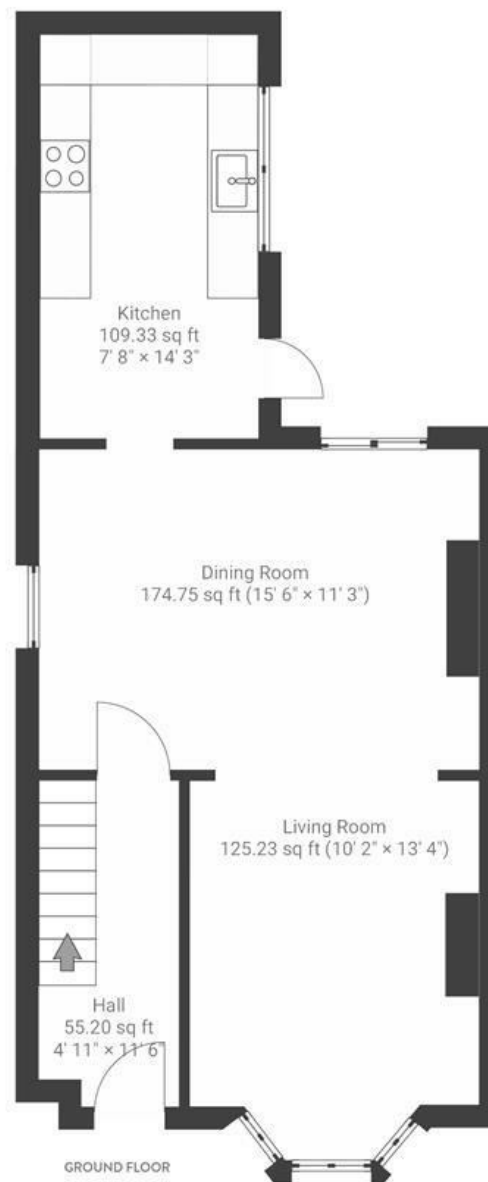


Grove Park Terrace

FISHPONDS

APPROXIMATE FLOOR AREA
74.6 SQM / 803 SQFT



Boardwalk

Grove Park

FISHPONDS, BRISTOL

£

£357,000

zzz

2 Bedrooms



BS16 2BL



1 Bathrooms

"We've been really happy living on Grove Park Terrace in our lovely Victorian terrace. We especially value the strong sense of community and friendly neighbours. Fishponds is a great place to live because of the mix of amenities and green spaces. Our house is only 5 minutes' walk from Fishponds Highstreet and 10 minutes' walk from Eastville Park. We love taking walks along the River Frome, and stopping for a coffee in FED or the Crafty Egg. There are lots of great parks nearby for the kids too."

